



*Optical Coatings from
Concept to Commercialization (OC₃)*

STARTER SOURCES



Based in New York, LTS is a leader in the manufacture of high-purity optical coating materials. We supply high quality products to the optics, fiber-optics, electronics, automotive, aerospace, crystal growth, and fuel cell industries, among others.

LTS is recognized worldwide for its new class of fluoride materials produced via DFM®: a novel production method that allows us to completely surpass material quality achieved by conventional means.

Over the years, LTS has collaborated with several companies to research and develop new products that have since proven to directly compete with existing materials, or have entirely replaced them as industry standards.

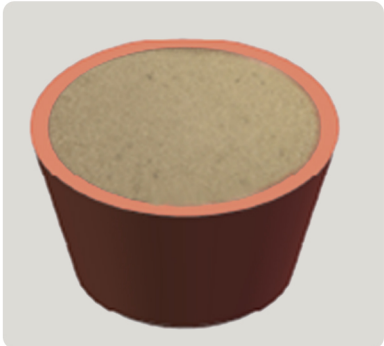
LTS also collaborates with clients to:

- Synthesize materials in non-traditional sizes, formulations, and purity profiles to your exact specifications.
- Develop products and solutions where established ones are not capable of fulfilling your needs.

Whether you need minor variations from a standard formulation, or a completely custom chemical system: LTS is your source.

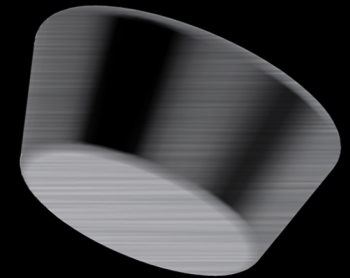
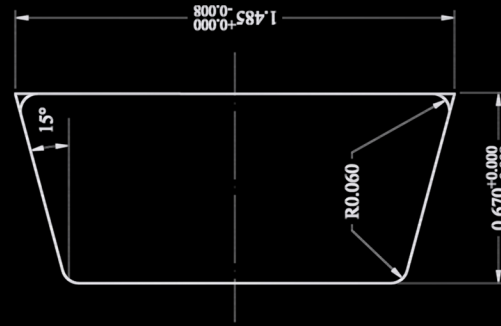
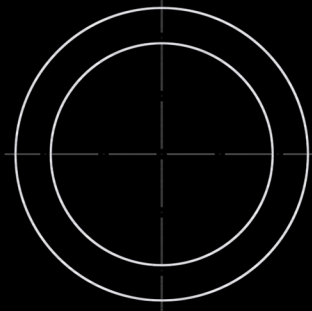
WWW.LTSCHEM.COM

37 Ramland Road, Orangeburg, NY 10962
Tel. 800 709-2808, Fax. 845 589-5975
WWW.LTSCHEM.COM



EB Melted Starter Sources

At LTS, we manufacture superior E-beam deposition cones for thin film industry. We supply these starter sources in metal, oxide or fluoride form. Based on the customer request, we can manufacture insert liners in custom sizes as well as standard sizes such as 13 cc, 15 cc, 20 cc, 25 cc, 40 cc to fit your needs.



Metals, Oxides, Fluorides, Alloys, & Composites

- | | | |
|-----------|------------------|---------------------|
| Aluminum | Aluminum Oxide | Magnesium Fluoride |
| Chromium | Molybdenum Oxide | Gadolinium Fluoride |
| Gold | Hafnium Oxide | Ytterbium Fluoride |
| Magnesium | Indium Oxide | |
| Nickel | Silicon Oxide | Gold/Nickel |
| Niobium | Scandium Oxide | Gold/Germanium |
| Palladium | Tantalum Oxide | Nickel/Palladium |
| Platinum | Titanium Oxide | Nickel/Vanadium |
| Tantalum | Tungsten Oxide | Cobalt/Chromium |
| Titanium | Zirconium Oxide | |
| Vanadium | | |